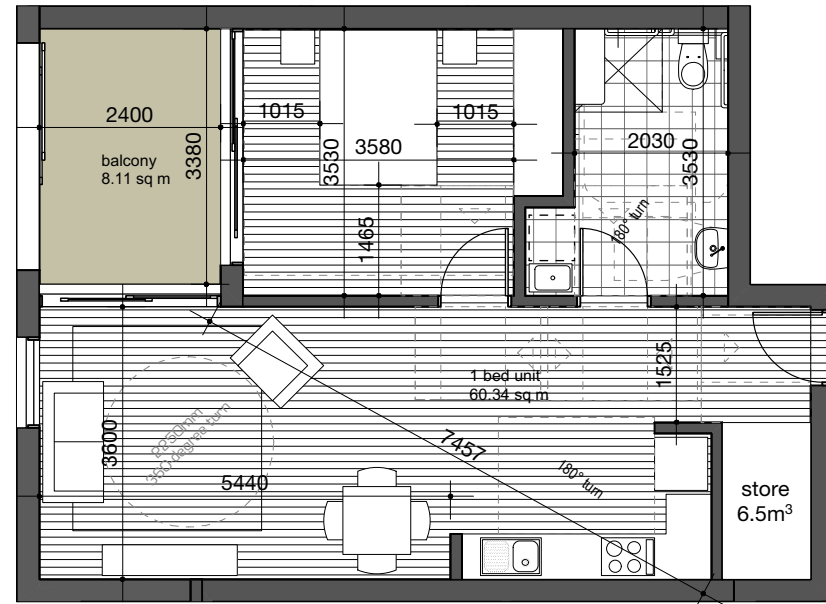
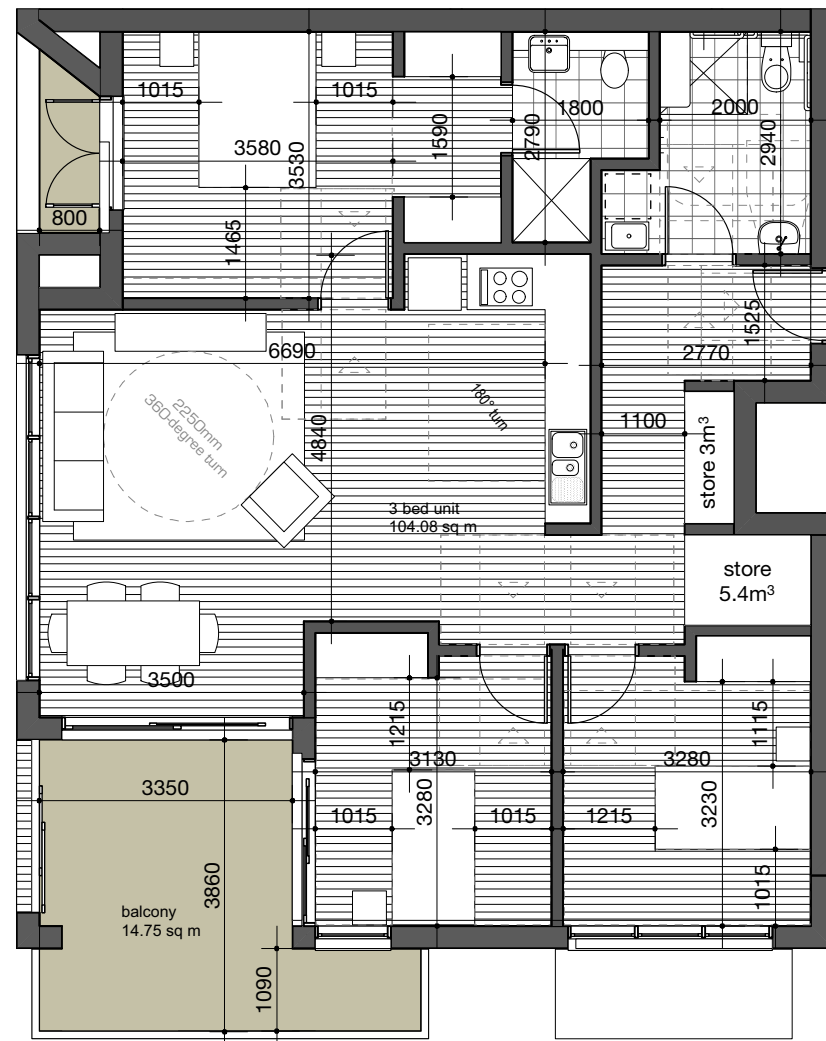


typical plan units 44, 52



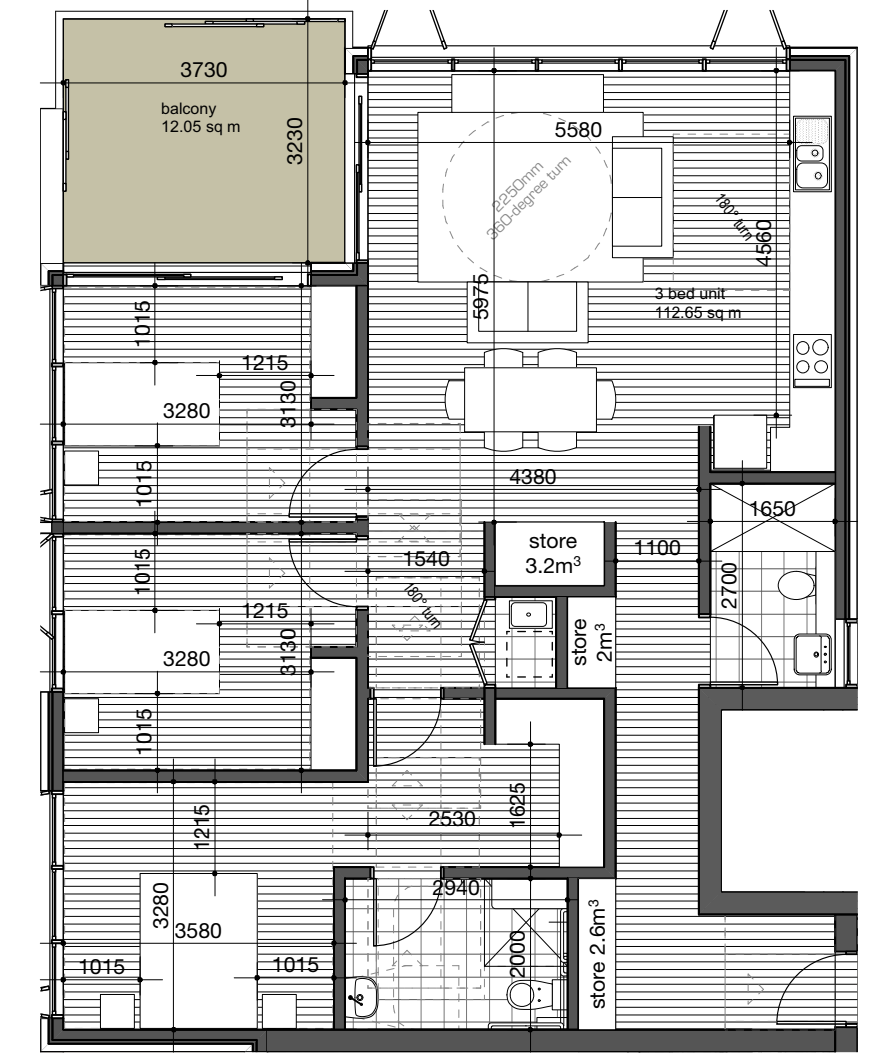
typical plan units 43, 51



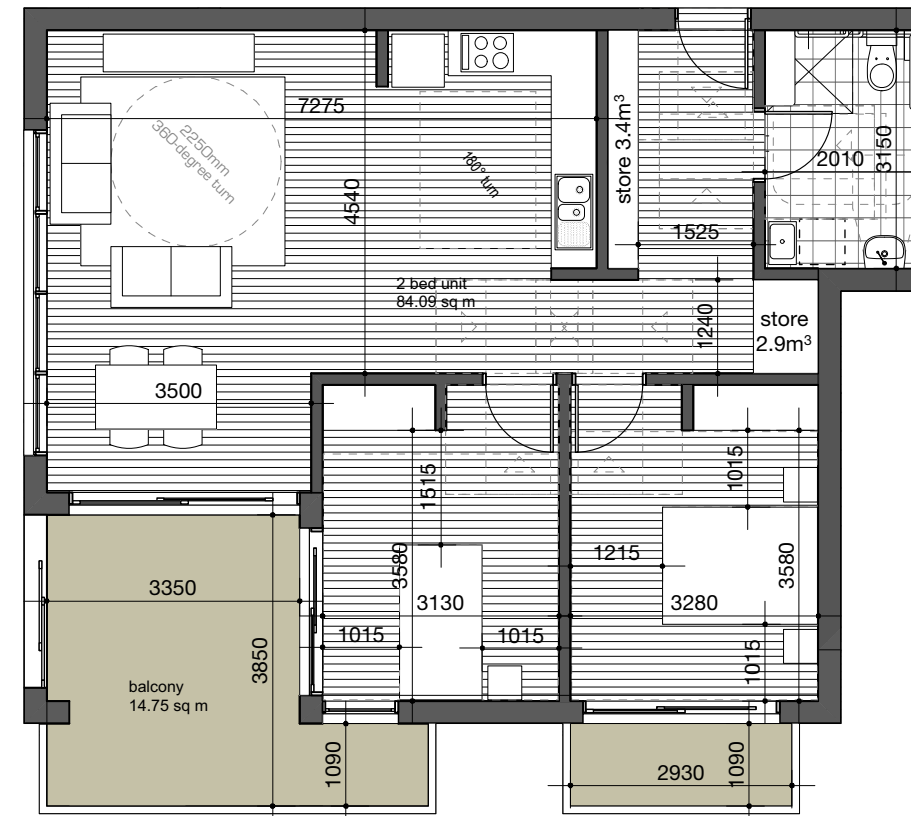
typical plan units 50



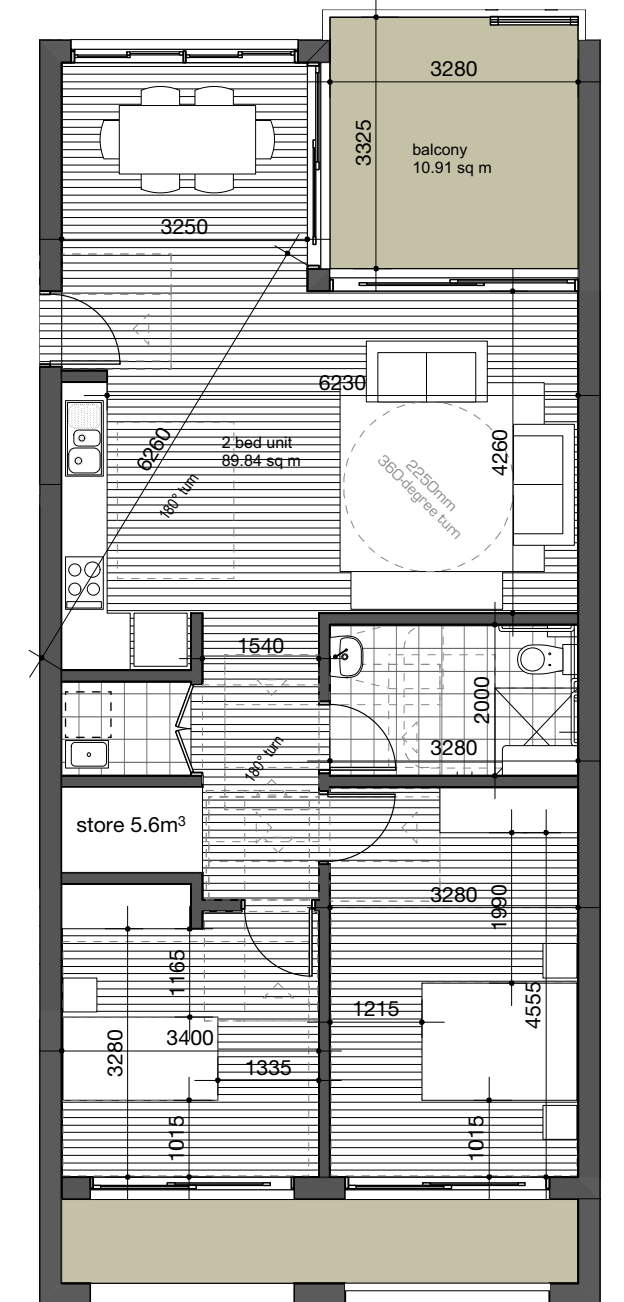
typical plan unit 30



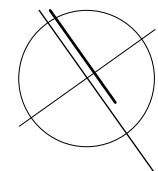
typical plan unit 45, 53



typical plan units 18, 29



typical plan units 17, 28, 41



typical unit layouts - building C

proposed development

23 Meares Place & 33 Collins Street, KIAMA

kennedy associates architects level 3 / 1 booth street annandale 2038 p + 61 2 9557 6466 f + 61 2 9557 6477 nominated architect - steve kennedy - registration no. 5828



in collaboration with



1821 - DA 42 C

C 18/07/18 for S34 meeting